

Who is the Workshop For?

With Tonalis workshops you will find there is always 'MORE TO MUSIC THAN MEETS THE EARS'. This highly practical, uplifting and innovative workshop is for all those people who have always wanted to expand their musicality and develop a deeper understanding of music. Above all, it will be informative and open doors for you into a richer experience of music.

Testimonials

Tonalis is watering the roots of music and reviving the mystery. IT IS VITAL WORK.
JONATHAN HARVEY - COMPOSER, AUTHOR OF 'MUSIC & INSPIRATION' AND 'IN QUEST OF SPIRIT'

What Tonalis achieves cuts through the inhibitions and prejudices which so negatively affect music making and restores the magic and humanity of real musical experience.

NICHOLAS BANNAN - LECTURER IN MUSIC EDUCATION, UNIVERSITY OF WESTERN AUSTRALIA

A Bookshop of Resources related to the course themes will be available, including M.DEASON-BARROW'S booklet on 'THE INNER LIFE OF MUSIC'.

Michael Deason-Barrow (GRSM, ARCM) is the director of 'Tonalis: Centre for the Development of Music'. He is a master singing teacher, an inspirational choir trainer and a university lecturer, whose independent spirit and open questioning mind has enabled him to extend the boundaries of musical understanding. You will find that he has the gift of making profound musical questions clear and utterly fascinating.

Fees: £78 (for booking by August 1st) **£85** (by Sept. 1st) **£90** (thereafter)
Concessions: £68 for students, OAPs, & the unwaged when booked with evidence by August 15th.
Work Scholarship Fee: £60 One Work Scholarship is available to students & the unwaged.

Times: 10am - 6pm Saturday, 10am - 5pm Sunday

Meals: Bring & Share Lunches or Local cafés. Tea & Coffee will be provided.

A Registration Letter incl. travel directions will be sent on receipt of your application.

TONALIS MUSIC CENTRE, 4 Castle Farm Close, Leighterton, GLOS, GL8 8UY

✂ **Application Form - 'The Mysteries of Melody'**

Please complete & send to the above address with your cheque payable to - 'Tonalis'.

Name: _____

Address: _____

Postcode: _____

Tel/Fax: _____ **email:** _____



The Interval



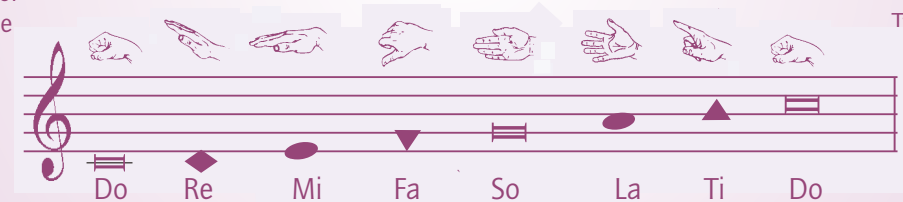
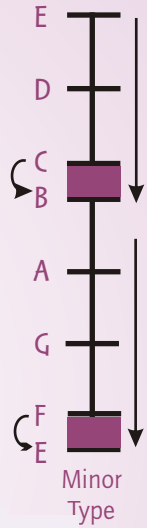
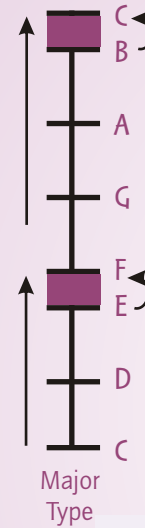
The Interval of the Fifth

From 'Harmoniograph' by A. Ashton
© Wooden Books

THE MYSTERIES OF

MELODY

A Journey into
the Secret Life of
Modes and Intervals
and enter into the
Deepest Realms of Music



Tonalis

Workshop Leader: Michael Deason-Barrow

25th - 26th September 2010

VENUE - TONALIS MUSIC CENTRE, STROUD, GLOS

Enquiries: Tel./Fax: 01666-890460 / info@tonalismusic.co.uk
www.tonalismusic.co.uk

'The Mystery of Melody' will offer you startling new insights that REVEAL MUSIC'S HIDDEN SIDES.

This workshop offers you a way to:

- Listen in to the secret powers of music and wake up to a new world of music
 - Enter into the deepest realms of music's archetypal foundations

Have you ever wanted to explore and understand

- Why different intervals between just two notes lead to such different experiences?
- How each interval - i.e. the relationship/conversation between two notes - is alive and more than mere note names (e.g. C-D), or descriptions (e.g. major 2nd)?
- What makes *modal* tunes so different from major/minor melodies?
- How different scales embody different experiences of time?

Meet the Intervals

We often say, 'they're playing our tune!'

But what is it that makes a melody so memorable?

You will often find it is the scale and tuning a piece is in - as well as the special relationship between particular tones in a motif - that makes the music so unique.

This workshop will explore how each tone of a scale has its own personality (particularly when sung against a drone). It is like a different character within a play (or a different side of our being), as well as being like a different colour. Whilst we clearly recognise the difference between blue and red, this is often not the case with intervals.

This workshop will help you discover the inner life that lies within each interval (e.g. doh → re (2nd) versus doh → soh (5th)), and how each interval has something completely unique to say. We will help you make friends with the mood of each different interval character and explore how, like friends, you can invite a number of different intervals to meet at a gathering and how they change when they are in different company.

To do this we will compare different interval relationships through

- **listening • singing • playing • improvising • moving and • meditating on them, and characterise each interval in terms of its • mood • gesture and • colour.**
- In addition, we will*
- **sing melodies and explore harmonies through making music centred predominantly around one interval, e.g. Bulgarian Music (2nds); Jazz and some African Musics (4ths); Medieval Music (5ths), and Javanese Music (7ths), as opposed to harmonies based on the 3rd which tend to dominate Western Music.**

Modes, Moods and Melodies

The tunes of many of our favourite songs are in an old language of music called 'modes' - each of which have very different 'moods' and characters. But it is not just Medieval and Renaissance Music, or English/Celtic Folk songs (e.g. 'Greensleeves') that are in modes. A lot of cool jazz (e.g. Miles Davis), rock music (e.g. Pink Floyd) and contemporary music (e.g. John Tavener) are also modal, as well as many World Musics.

Just as a painter creates a specific mood through using particular colours, so each mode uses a combination of certain notes which leads to a particular mood being created.

A mode is more than just a set of pitches, it expresses a different state of being.

Thus modes in traditional musics are often associated with:
different emotions, deities, times of the day, festivals and seasons.

This deeper meaning has been lost in today's musical world. Through venturing on this workshop into the world of modes you will find you expand your musical expressivity.

On this workshop we will sing, move and listen to songs and choral music in different modes and explore:

- **THE DIFFERENCES BETWEEN THE 7 MODES** (Lydian, Ionian, Mixolydian, Dorian, Aeolian, Phrygian and Locrian), as well as what each mode expresses.
- **A HUGE RANGE OF SCALES** (from Whole Tone, 12-Tone and Blues scales to Hungarian Gypsy minor, Klezmer and the Indian raga - Bhairav). We will also explore different pentatonic scales, from Native American and Javanese to Balinese and Japanese.
- **HOW THE POLARITIES OF:** light - dark; inner - outer; descending - ascending; openness - closedness; stability - movement; tension - resolution are created through the use of different modes and intervals.
- **HOW DIFFERENT MODES CREATE AMAZINGLY DIFFERENT HARMONIES**
- **HOW DIFFERENT MODES EMBODY THE MOODS OF EACH SEASON**, via improvisations called: Summer-time (Lydian); Light and Dark (Dorian); The Harvest Moon (Aeolian); Something Sinister (Locrian); Ascension (Mixolydian); and Lamentation (Phrygian).
- **WHY MODES CREATE A SENSE OF CIRCULAR AND ETERNAL TIME** as opposed to the more linear goal oriented qualities typical of major and minor music.
- **HOW THE OLD METAPHYSICAL WORLD VIEW GAVE WAY TO NEW HUMANISTIC WORLD VIEWS** is mirrored in the way modal scales were transformed into major/minor scales.

We will also 'PLAY' with and 'IMPROVISE' on scales and modes in improvisations and games such as 'Twisted Quotes' - where we will take a familiar tune and find out what happens to it when you sing/hear it in different modes.